



[www.linax.com.br](http://www.linax.com.br)

## **CERTIFICADOS DE ANÁLISES**



[www.linax.com.br](http://www.linax.com.br)

LINAX Comércio de Óleos Essenciais LTDA  
Votuporanga – SP – Brasil

## Analyse Certificate

**Commercial name:** Natural Linalool  
**Botanical Origen:** *Ocimum basilicum* L.  
**Extraction:** Steam Distillation  
**Expressed organ:** leaves

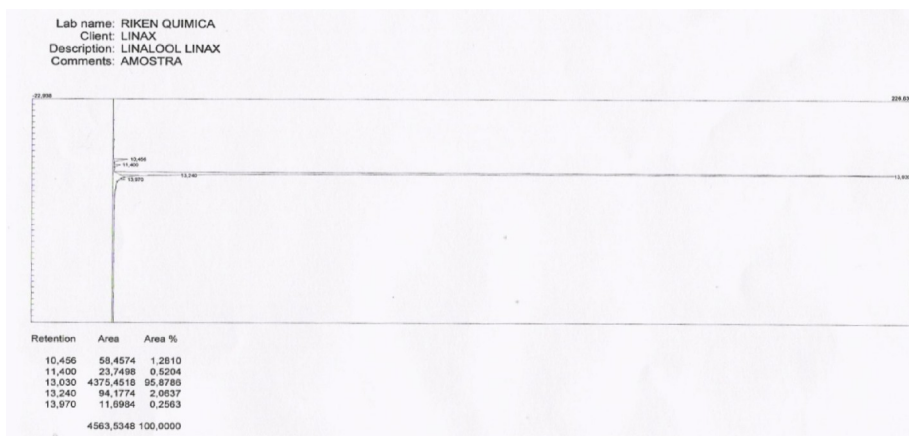
### Physical Parameters

**Product/Standard:** 95-98% linalool  
**Color:** Incolor Transparent Liquid  
**Odor:** Typical  
**Relative density:** 0.873 - 0.943  
**Polarization:** -6.50 to -16.00  
**Application:** Perfumery and cosmetics, soap production, pharmaceutical industry.

### Handlyng and Storage

**Recommended Storage conditions:** Keep well closed, cool and protected from light, not mora than 35 °C.

Product best use before under 3 years.





[www.linax.com.br](http://www.linax.com.br)

LINAX Comércio de Óleos Essenciais LTDA  
Votuporanga – SP – Brasil

## Analyse Certificate

**Commercial name:** Basil Essential Oil  
**Botanical Name:** *Ocimum basilicum* L.  
**Extraction:** Steam Distillation  
**Expressed organ:** leaves  
**CAS #** 8015-73-4  
**EINECS #** 283-900-8

### Physical Parameters

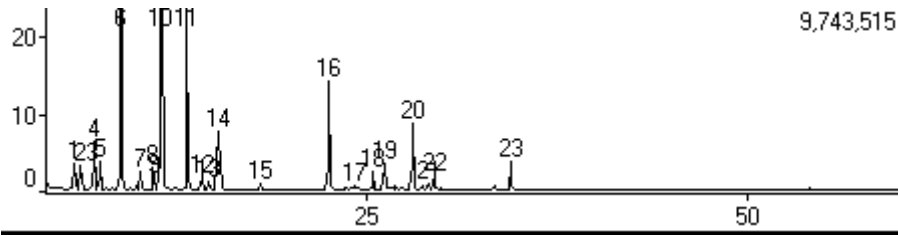
**Product/Standard:** Basil Essential Oil 100% Pure & Natural  
**Color:** Pale Yellow Transparent Liquid  
**Odor:** Herbal Spicy  
**Relative density:** 0.873 - 0.943  
**Polarization:** -6.50 to -16.00  
**Refraction Number:** 1.465 – 1.480  
**Boiling Point:** 212-215<sup>0</sup>C  
**Composition:** Linalool, geraniol, methylhavicol, nerol, citronellol, bornylacetate, eugenol, limonene, etc. (see chromatography).  
**Application:** Perfumery and cosmetics, soap production, pharmaceutical industry, medicine, food industry.

### Handlyng and Storage

**Recommended Storage conditions:** Keep well closed, cool and protected from light, not more than 35 °C.

**Product best use before under 3 years.**

**LINAX BASIL ESSENTIAL OIL**  
**GAS CHROMATOGRAPHY – GC/MS**



PKNO	R.TIME	I.TIME	F.TIME	A/H(sec)	AREA	HEIGHT	MARK	%Total	NAME
1	5.948	5.908	6.017	2.166	2959782	1366527		0.65	
2	6.353	6.308	6.425	2.181	2620691	1201491		0.58	
3	7.048	6.950	7.108	2.400	3058195	1274404	V	0.67	
4	7.169	7.108	7.283	2.528	6180062	2444964	V	1.36	
5	7.565	7.517	7.650	2.420	3349884	1384450		0.74	
6	8.959	8.783	9.750	3.077	117350052	38135667	VS	25.76	
7	10.256	10.200	10.367	2.959	2853798	964304		0.63	
8	11.022	10.967	11.083	3.203	3546078	1107226	V	0.78	
9	11.121	11.083	11.225	3.277	2129572	649836	V	0.47	
10	11.618	11.342	13.200	4.643	180209873	38815862	VS	39.56	
11	13.283	13.200	14.400	3.655	57735280	15794090	VS	12.67	
12	14.270	14.208	14.400	3.853	2244550	582539	T	0.49	
13	14.767	14.700	14.900	3.796	1700550	447946	V	0.37	
14	15.320	15.242	15.467	3.507	10490489	2990986		2.30	
15	18.158	18.108	18.358	4.136	1190512	287819		0.26	
16	22.628	22.392	22.850	3.907	21720701	5558903	VS	4.77	
17	24.369	24.242	24.475	5.161	1246374	241478		0.27	
18	25.538	25.383	25.692	4.200	3705755	882347	V	0.81	
19	26.274	26.200	26.908	4.198	5824502	1387464	S	1.28	
20	28.144	28.042	28.258	4.096	13967091	3409653	V	3.07	
21	29.162	29.075	29.267	5.463	1441270	263805		0.32	
22	29.503	29.358	29.592	4.178	2888864	691507	V	0.63	
23	34.510	34.358	35.625	4.865	7110782	1461720	VS	1.56	

**PKNO 06) 1-8 Cineol (~ 26%)**

**PKNO 10) linallol (~ 40%)**

**PKNO 11) canphor (~ 13%)**



[www.linax.com.br](http://www.linax.com.br)

**LINAX Comércio de Óleos Essenciais LTDA**  
Votuporanga – SP – Brasil

## **Toasted Coffee Oil Analyse Certificate**

**Commercial name:** Coffee oil  
**Botanical Name:** *Coffea arabica*.  
**Extraction:** cold press  
**Expressed organ:** beans  
**NBM code:** 33012990  
**NCM code:** 15149100

### **Physical and Chemical Properties**

Physical State:	Viscous liquid
Color:	Dark brown
Odor:	Toasted coffee
Index of acidity:	1.29
Acidity in acid oleic (%)	0.66
Melting point (°C):	4 –10
Flash point (°C)	323 - 341
Smoke point (°C)	218 - 230
Density (g/cm <sup>3</sup> ):	0.922 –1.05
Viscosity (cP)	185 - 300
Refractive index (25°C):	1.14 – 1.49
Saponification value:	184.5
Iodine value:	88.9 – 99.0
Solubility in water:	Insoluble
Faty acidity:	2.8 – 5.3
<b>Faty acidy distribution:</b>	
Palmitic:	34.5 - 33.7
Stearic:	8.9 –9.1
Oleic:	10.2 – 10.4
Linoleic:	40.3 – 41.0
Araquidic:	4.0 – 3.9
Lonolenic:	1.1 – 1.0



www.linax.com.br

LINAX Comércio de Óleos Essenciais LTDA  
Votuporanga – SP – Brasil

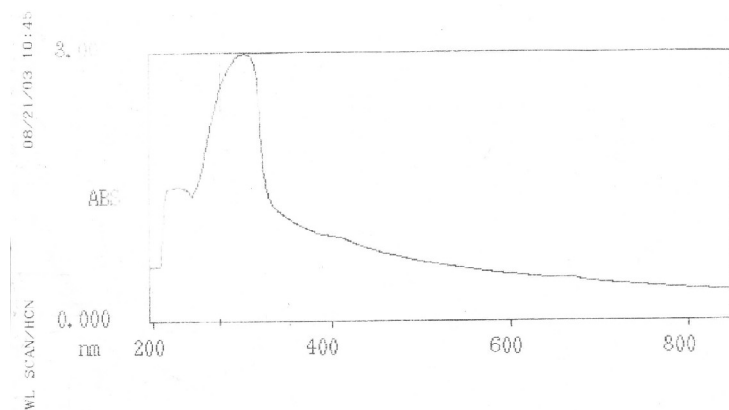
**LINAX COFFEE OIL (crude)**  
**Nº 06/03/06**

**Commercial name:** Coffee oil  
**Botanical Name:** *Coffea arabica*.  
**Extraction:** cold press  
**Expressed organ:** beans

**Relative density:**  $0.937 \pm 0.005$   
**Refraction Number:**  $1.458 \pm 0.005$   
**Iodine number (cg l/g):**  $101 \pm 0.5$   
**Unsaponificated matter (g/100g):**  $11,3 \pm 0.0$

**Application:** Perfumery and cosmetics, soap production, pharmaceutical industry, medicine, food industry

\* UVB absorbance of raw coffee beans oil.



PEAK		VALLEY	
NO.	nm	nm	Abs
1	668.0	653.0	0.471
2	303.0	243.0	1.375
3	228.0		1.492